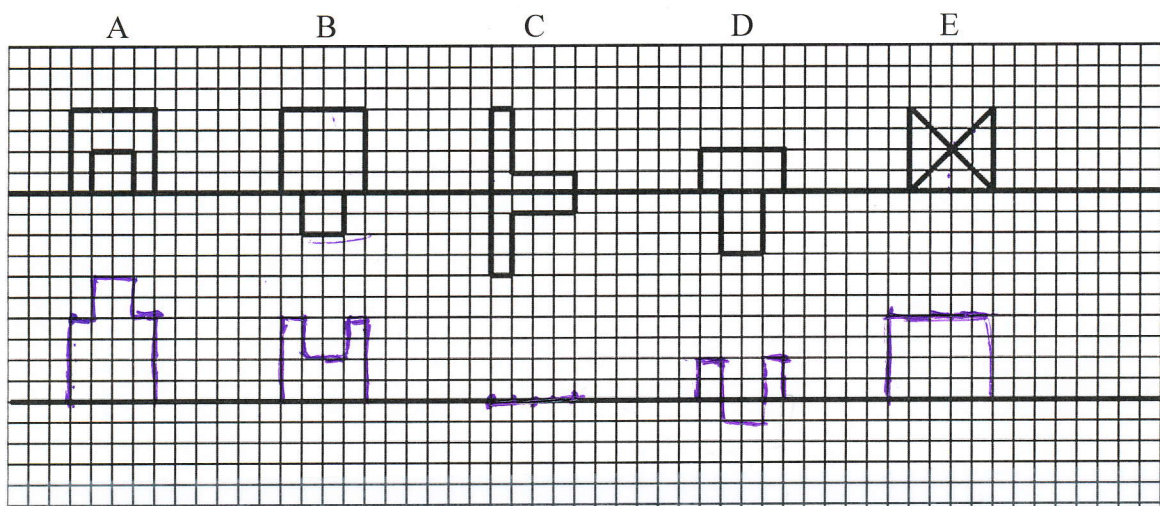


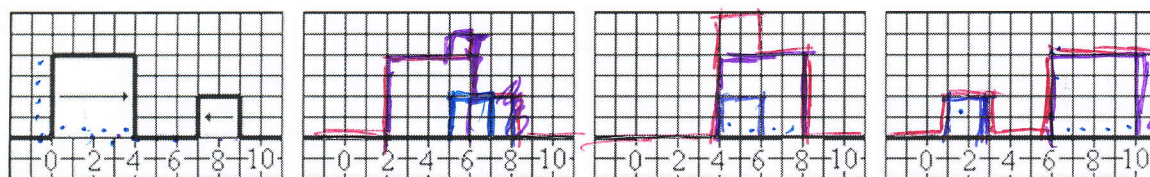
Name: \_\_\_\_\_ P: \_\_\_\_\_ Date: \_\_\_\_\_

# Superposition of Waves Practice

Draw the resultant wave from the superposition of the waves below.



Both box waves are traveling a distance of 1 square per second. Draw the superimposed wave after 2 seconds, 4 seconds and 6 seconds



After 2  
seconds

After 4  
seconds

After 6  
seconds

Red = Resultant  
Wave

Complete the superposition to solve the riddle:

What's green, fuzzy, and if it fell out of a tree, it would kill you?

A POOLTABLE!

